



Icahn
School of
Medicine at
Mount
Sinai

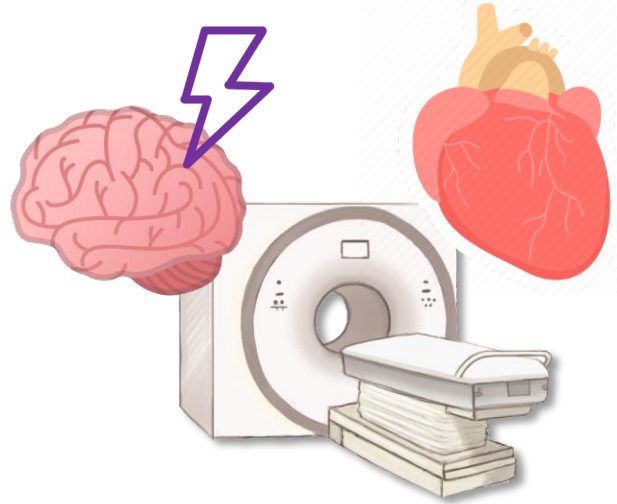
BioMedical Engineering and Imaging Institute

Lead Researcher: Zahi Fayad, PhD

STUDY 23-00793

RECRUITMENT

Help Us Understand How Stress Affects Blood Vessels



Volunteers needed for research studying the links between stress and heart attacks. This is a paid study at the Icahn School of Medicine at Mount Sinai. The study involves 2 visits 2-8 weeks apart, PET/MRI imaging, simple blood tests, providing a hair sample, and lifestyle questionnaires. **You may be compensated up to \$200.**

Who can participate?

- Aged between 40 and 65 years old
- Have previously had high blood pressure and/or a blood test with high “bad cholesterol”

**To Learn More
& see if you
qualify
SCAN HERE**



Study Contact: 212-824-8484

Renata.Pyzik@mssm.edu /

212-824-9101

Aileen.Leonardo@mssm.edu

<https://redcap.link/pmbnd6ul>



Effective Date: 12/23/2024
End Date: 8/5/2025



*Interested? Busy? Save this
information for later!*

*This study is funded by
National Institutes of Health
P01 HL131478*